

**CopperCAD CADWare is licensed software which will not function without a valid user ID.**

**There are Two Major steps the user must perform in order to install and activate the software.**

- 1) Generate a user ID for every seat you wish to activate, and e-mail the user ID report back to CopperCAD at [cadware@coppercad.com](mailto:cadware@coppercad.com).
- 2) Install the CopperCAD CADWare on your workstation in your local pcbenv directory.

## **Step 1 A —> Generating user ID's — For “Expert” License Users**

- 1) CopperCAD design will send you by e-mail a small “SKILL” program called “**AGen\_userid.il**”. This program is used to create a new user ID for each licensed copy of CopperCAD utilities you wish to activate.
- 2) Save the files “**AGen\_userid.il**” and “**CCD\_data.dat**” in your current working Allegro directory. This would be the directory where your current working design is located.
- 3) Open up your existing design and at the Allegro command prompt,

```
enter —> skill
enter —> (load "AGen_userid.il" "new")
enter —> AGen_userid
enter —> exit
```

**Note:** The commands are **case sensitive**, enter them **exactly as shown** .

- 4) An output file will be created by the program in your current working directory. The output file name will have the following naming convention :

**AGen\_userid\_#####.rep**

**E-mail the output ID report file to [cadware@coppercad.com](mailto:cadware@coppercad.com)**

In the E-mail identify yourself (name, address and company) along with the purchase order number or name and e-mail address of your purchasing co-coordinator or manager.

## Step 1 B —> Generating user ID's — For “Studio” License Users

- 1) CopperCAD design will send you by e-mail a small “SKILL” program called “**AGen\_userid.il**”. This program is used to create a new user ID for each licensed copy of CopperCAD utilities you wish to activate.
- 2) Save the files “**AGen\_userid.il**” and “**CCD\_data.dat**” in your current working Allegro directory. This would be the directory where your current working design is located.
- 3) Open the file “Allegro.ilinit” in your local pcbenv directory. If the file Allegro.ilinit does not exist, create one using any text editor.
- 4) Add the text : **load("AGen\_userid.il" "new")** to the Allegro.ilinit file.
- 5) Open up your existing design and at the Allegro command prompt,

Enter —> **AGen\_userid**

**Note:** The commands are **case sensitive**, enter them **exactly as shown** .

- 6) An output file will be created by the program in your current working directory. The output file name will have the following naming convention :

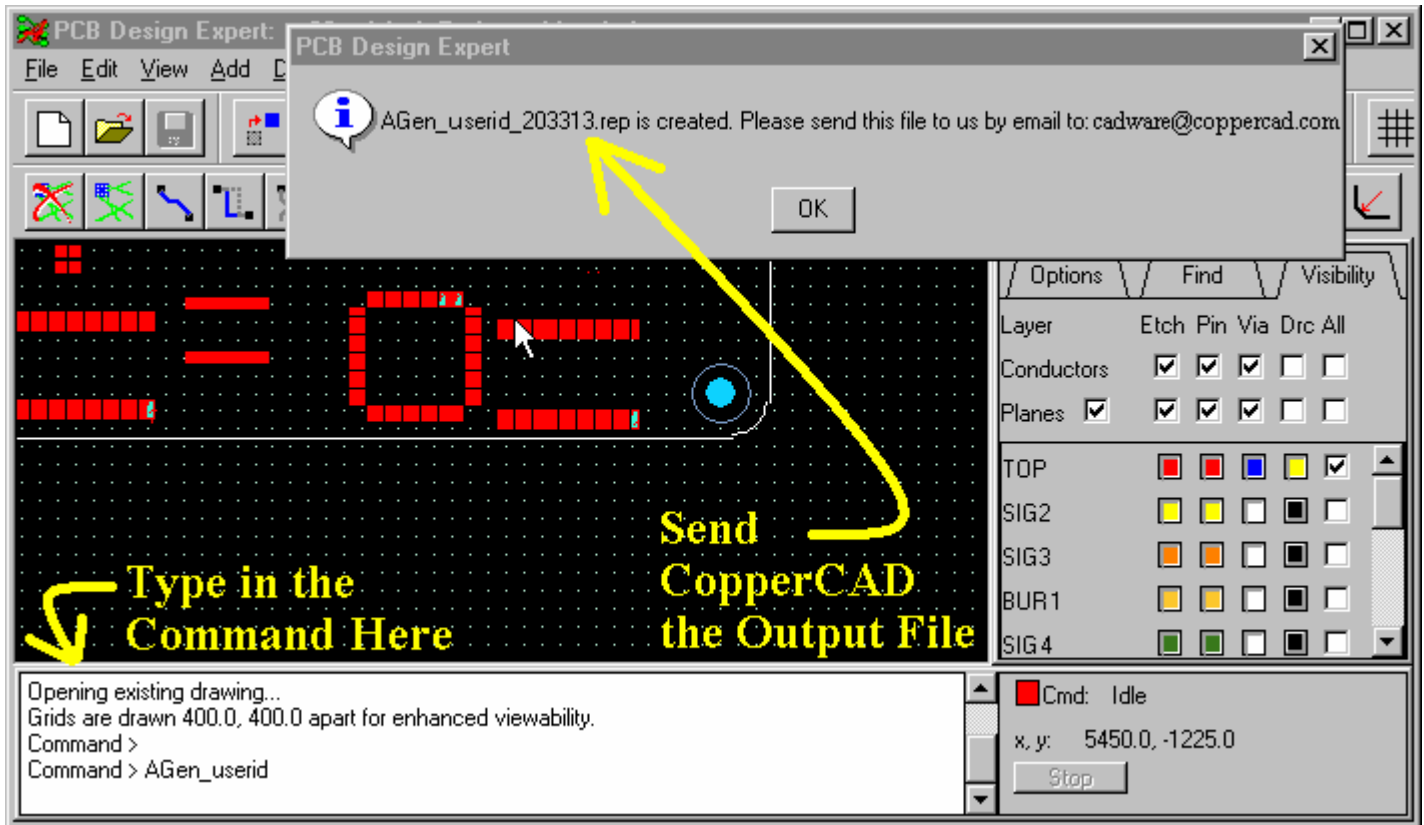
**AGen\_userid\_#####.rep**

**E-mail the output ID report file to cadware@coppercad.com**

In the E-mail identify yourself (name, address and company) along with the purchase order number or name and e-mail address of your purchasing co-coordinator or manager.

## Step 1 —> Generating user ID's –continued...

The screen shot below shows the command to be entered, and the resulting pop-up window.



## Step 2 —> Installing the CADWare

- 1) After you have successfully generated and e-mailed CopperCAD your user ID, CopperCAD will send you the CADWare program files you have purchased for you or you or your system administrator to install.
- 2) Save all CopperCAD CADWare files in your own local 'PCBENV' directory. Typically your local path will be " D:\your\_username\pcbenv ". In Version 15.x, your local "pcbenv" directory is determined by the 'HOME' variable.

**Note:** The "Studio 220" license does not support object properties or tech file export, so some programs may only run in a limited mode. We are developing new methods to achieve similar functionality, however this may not always be possible.

## Step 3 —> Run IT!

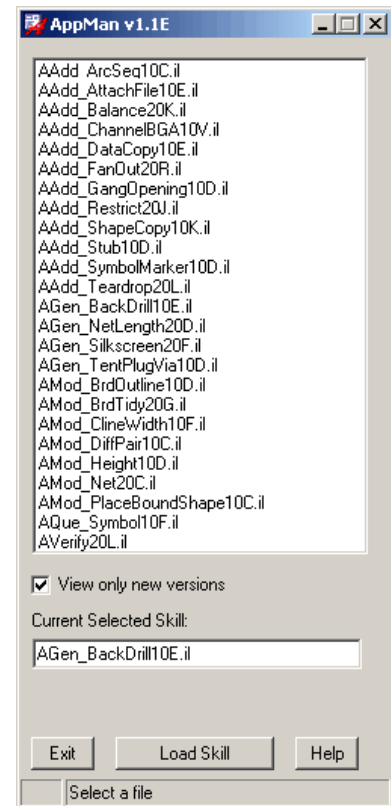
- 1) To run any of CopperCAD's CADWare utilities, open any existing design and hit "**Control B**" on your keyboard. CopperCAD's application manager menu called "**AppMan**" will pop up. (as shown).
- 2) Select the program that you wish to run and then click the "**Load Skill**" button.
- 3) Follow the instructions and **RUN IT**.

OR

Use our new CopperCAD menu button



\* available when using version 15.2 and above



**CopperCAD**-Ware makes impossible tasks possible

## Trouble Shooting

The program “AGen\_userid.il” has three functions :

- 1) Collect user data and generate a user ID report.
- 2) Add the alias command **alias ~B AppMan** to the "env" file.
- 3) Add the two load commands **load("AppMan.il " "new")** and **load("ALoad\_CCDMenu.il" "CopperCAD")**, (ALoad\_CCDMenu (list nil)) to the “allegro.ilinit” file.

If AGen\_userid fails to update the env file, and / or the allegro.ilinit file.  
Or if the directory path is Read-Only, you may have to update these files  
Manually, in order to get the “<CTRL> B.” command to function.

On UNIX systems you may require root access to change file and / or  
directory permissions.

If root access is not available, AppMan can be loaded manually by entering  
the Skill load and run commands directly into the command line window.

Open up your existing design and at the Allegro command prompt,

```
Enter —> skill
Enter —> (load "AppMan.il " "new")
Enter —> AppMan
Enter —> exit
```

**Note:** The commands are **case sensitive**, enter them **exactly as shown**

## Skill Path

Your local “pcbenv directory must be in the Skill search path. To determine your  
current Skill path, open a existing design and in the command window enter:

```
Enter —> skill
Enter —> (getSkillPath)
```

The current skill search path will be displayed in the command window.

To add your local pcbenv directory path to your existing SKILL search path,  
add the following line to your allegro.ilinit file:

```
setSkillPath(cons("my_local_path/pcbenv" getSkillPath()))
```